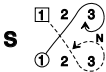


# ANDREW GILLIES' STRATHSPEY

8x32 S



S  $\left[ \begin{array}{c} \text{---} \\ \text{---} \end{array} \right] T_R$

$\left[ \begin{array}{c} \text{---} \\ \text{---} \end{array} \right] T_L$  S

$\left[ \begin{array}{c} \text{---} \\ \text{---} \end{array} \right] T_R T_L$

2 1x3

S  $X_R$

2 1 3

6